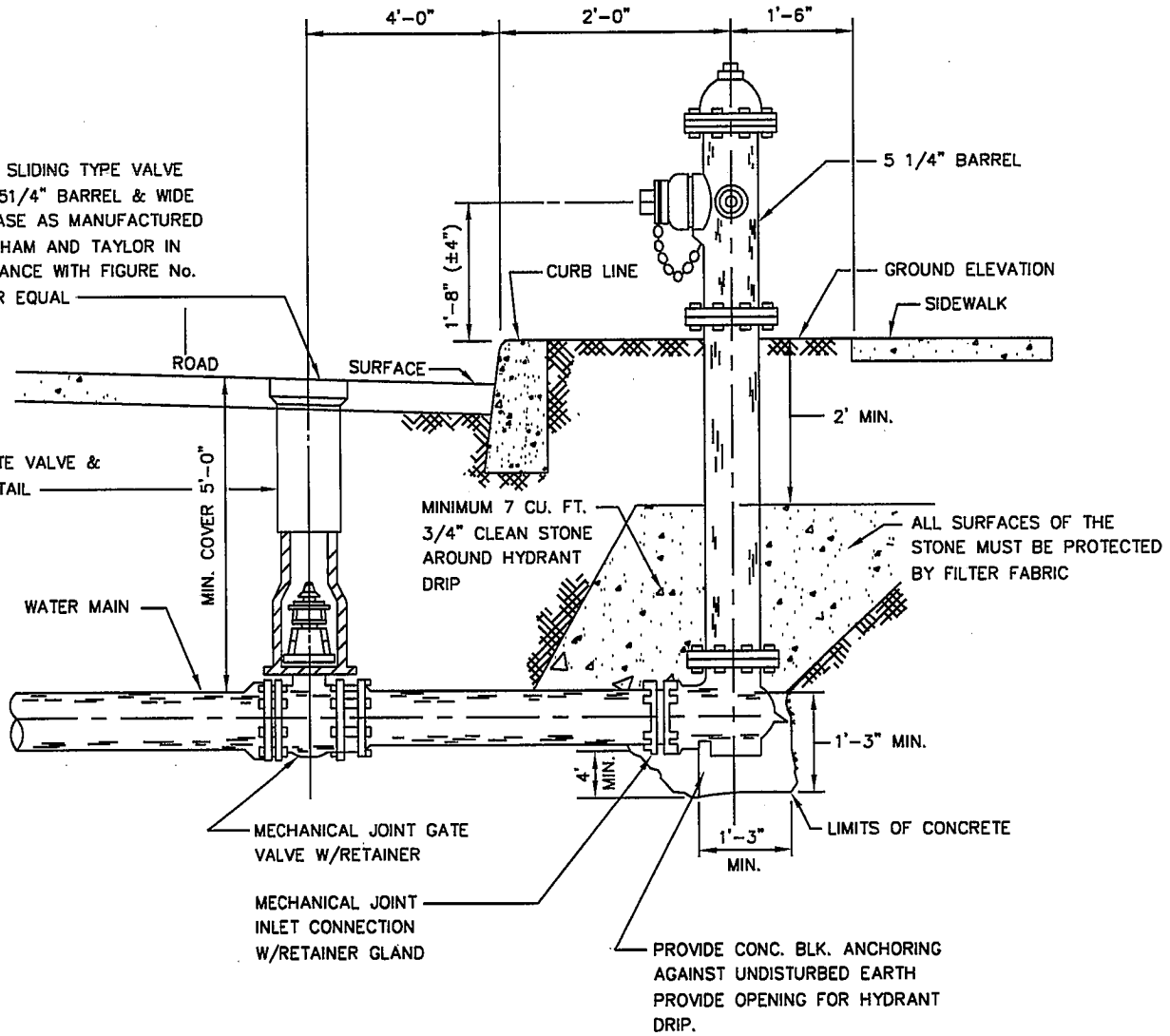


3 PIECE SLIDING TYPE VALVE
BOX W/5 1/4" BARREL & WIDE
OVAL BASE AS MANUFACTURED
BY BINGHAM AND TAYLOR IN
ACCORDANCE WITH FIGURE No.
4907 OR EQUAL

SEE GATE VALVE &
BOX DETAIL



MAIN	M.J. GATE VALVE	HYDRANT *(2)	HOSE NOZZLES	PUMPER NOZEL	INLET CONNECTION
4"	4"	A-420	2 1/2"	Not Applicable	4" M.J.
6"	6"	A-423	2 1/2"	4 1/2"	6" M.J.
8"	6" *(1)	A-423	2 1/2"	4 1/2"	6" M.J.

NOTES:

1. VALVE MAY BE SAME SIZE AS MAIN WITH REDUCER AFTER THE VALVE PROVIDED THAT THE REDUCER IS NOT CLOSER THAN 3 FEET TO THE CURB AND IS ADEQUATELY RESTRAINED.
2. THE HYDRANT MODEL NUMBERS REFER TO MUELLER SUPER CENTURION 200 HYDRANTS OR EQUAL.
3. TO MAINTAIN 5 FEET OF COVER HYDRANT BURY LENGTH SHALL BE A MINIMUM OF 5 FEET 6 INCHES.
4. HYDRANTS LOCATED AT A DISTANCE GREATER THAN 30 FEET FROM THE WATER MAIN MUST HAVE SHUT-OFF VALVE AT THE WATER MAIN AND WITHIN 8 FEET OF THE HYDRANT.
5. ANY PIPE JOINTS BETWEEN THE SHUT-OFF VALVE AND THE FIRE HYDRANT MUST BE RESTRAINED. THE TYPE OF RESTRAINT MUST BE SPECIFIED ON THE PLANS.

REVISED 10-08-03 CADD DRAWING BY GTS CONSULTANTS, INC.

DATE: JAN. 1991
DRAWN: G.G.&J.T.R.
SCALE: NONE

LAKWOOD TOWNSHIP
MUNICIPAL UTILITIES AUTHORITY

BLOW OFF HYDRANT
DETAIL